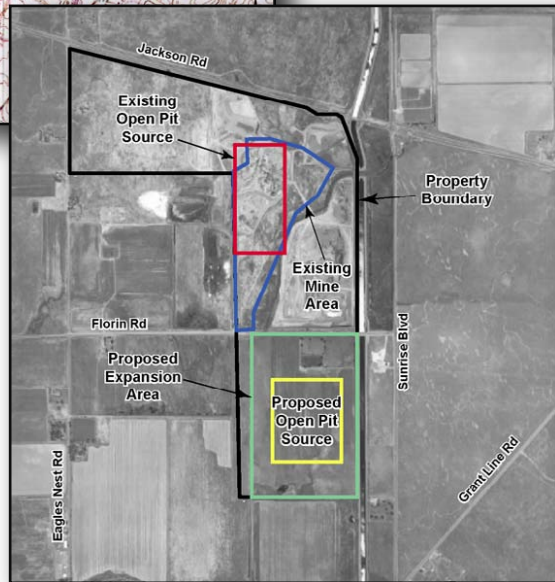
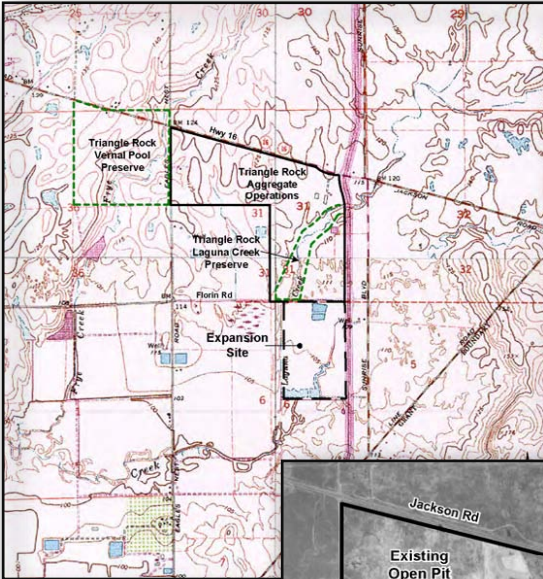


REGION NORTHERN	COUNTY SACRAMENTO	<b>SACRAMENTO QUARRY EXPANSION</b>	CLASSIFICATION AQ <b>IN</b>
--------------------	----------------------	--	-----------------------------------

AQ = Air Quality • BIO = Biological Studies • CEQA = California Environmental Quality Act • NEPA = National Environmental Policy Act • NS = Noise Studies • WSA = Water Supply Assessment

**C** Commercial **E** Educational **IN** Industrial **IS** Institutional **M** Mixed Use **R** Residential



Impact Sciences prepared a health risk assessment and air quality impact analysis for expansion of the Triangle Rock Products aggregate quarry in Sacramento County. The risk assessment and impact analysis were prepared for the applicant to submit to the County planning department for use in an Environmental Impact Report for the proposed project. Tasks included estimates of toxic air contaminants emissions from diesel off-road equipment and criteria pollutant emissions. Health

impacts of diesel exhaust particulate matter and PM10 and nitrogen dioxide impacts were evaluated using AERMOD. Impact Sciences also prepared an estimate of the project's greenhouse gas emissions

**Client:** Triangle Rock Projects, Inc.

**Contact:** John Buada, Buada Associates  
4872 North Arcade Avenue  
Fig Garden Studio  
Fresno, CA 93704  
(559) 432-4902

**Lead Agency:** Sacramento County Department of Environmental Review and Assessment

**Project Manager:** David Deckman

**Project Period of Performance:** April 2006 – May 2007

**Contract Value:** \$27,300